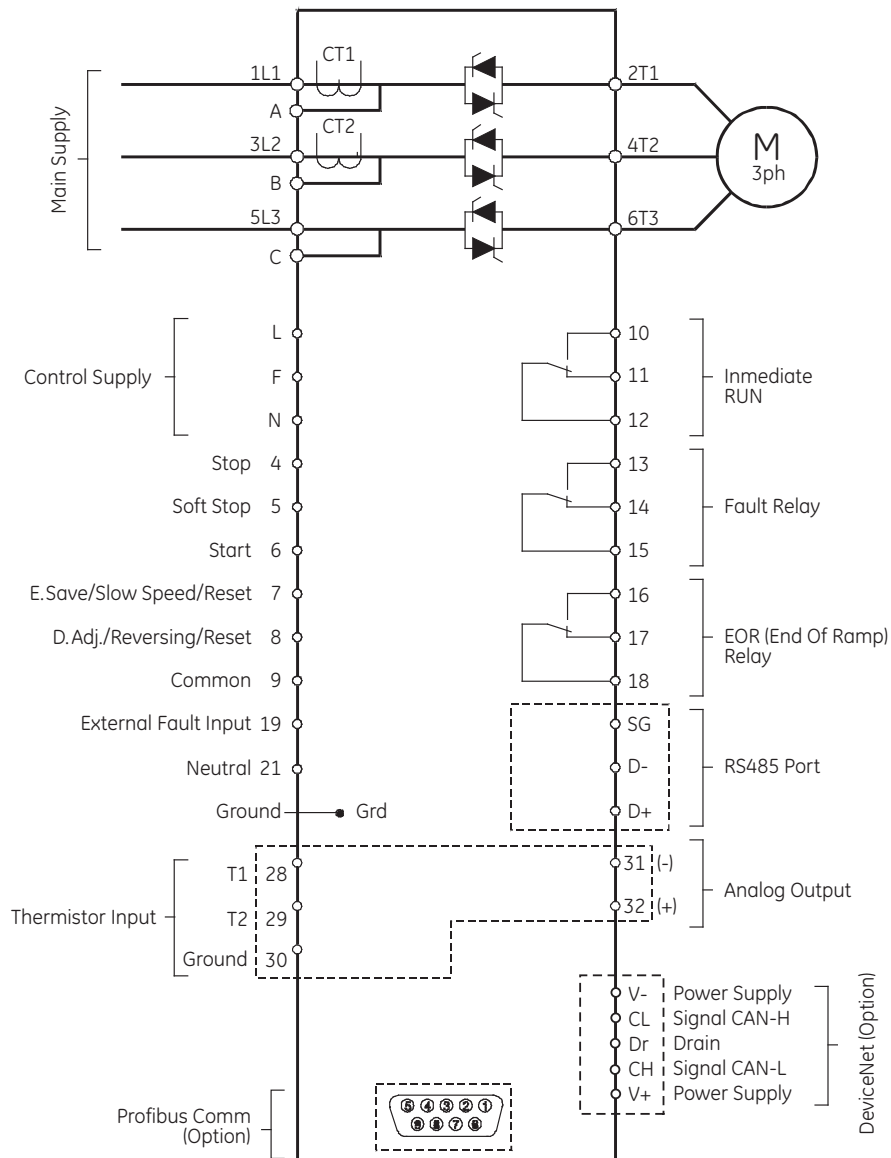


Reduced Voltage Starters Solid State

ASTAT XT Soft Starter

Technical Specifications

I/O Wiring, Basic scheme

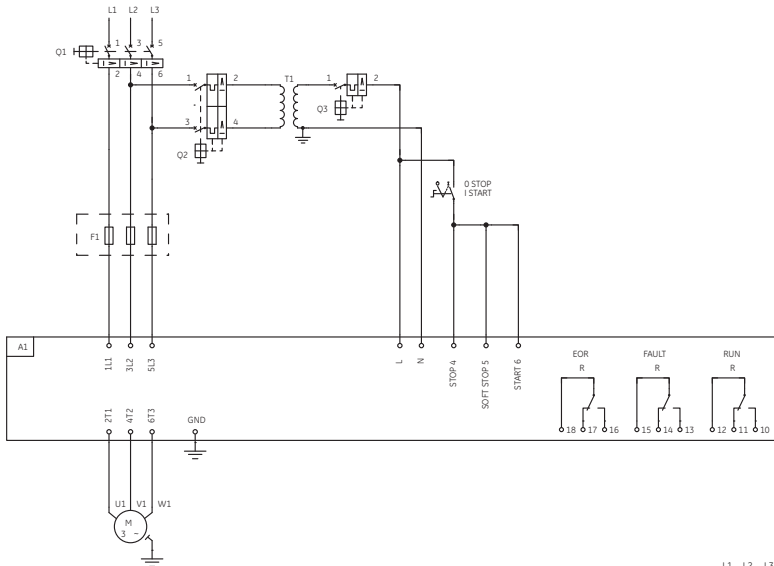


Reduced Voltage Starters

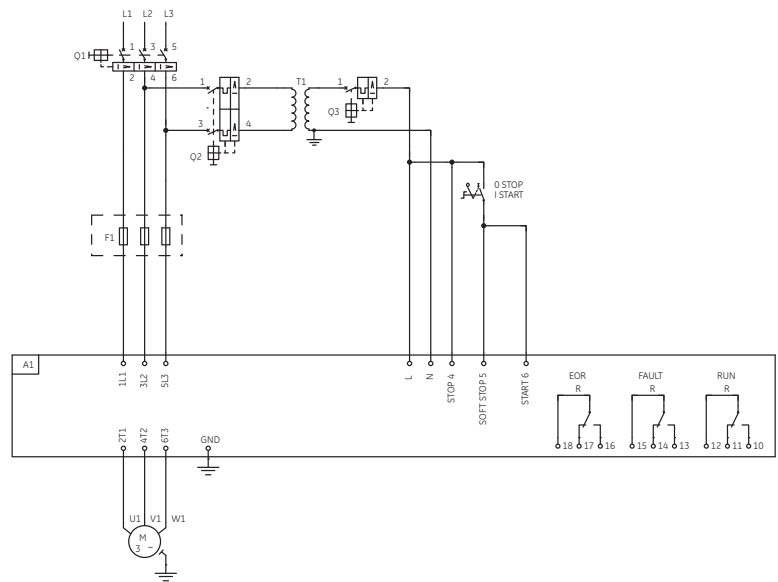
Solid State

ASTAT XT Soft Starter

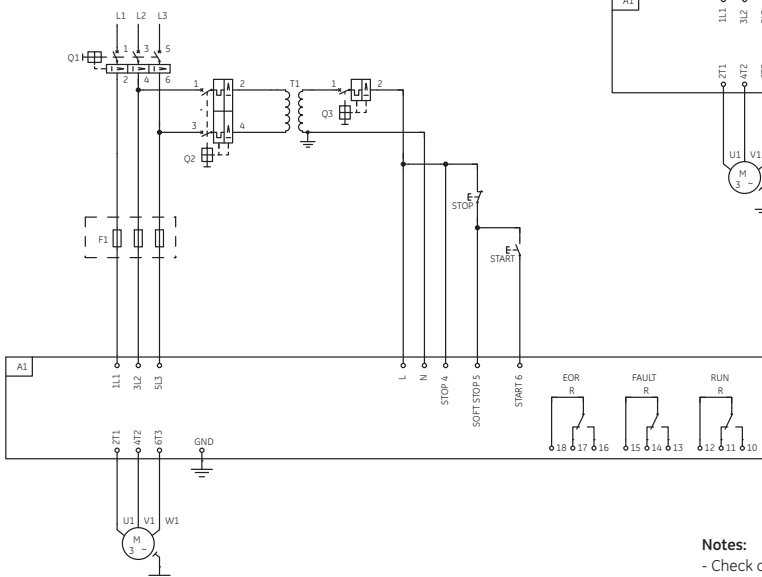
Application Wiring Diagrams - Basic Diagram without Line Contactor



With Soft Start and Coast to Stop by Permanent Command Control



With Soft Start and Soft Stop by Permanent Command Control



With Soft Start and Soft Stop by Push Button Control

Notes:

- Check coordination tables for proper selection of Breaker and Line contactor.
- Control Voltage and Control Input voltage are from same source in above example. Please check manuals if you have different sources for Control Voltage and Control input Voltage.
- Semiconductor Fuses "F" are only required for Type 2 coordination. Please check coordination tables
- ASTAT XT Soft Starter can operate without line contactor, however the use of a line contactor will increase the operation safety, and provide a way to switch off the Breaker in case of an emergency.



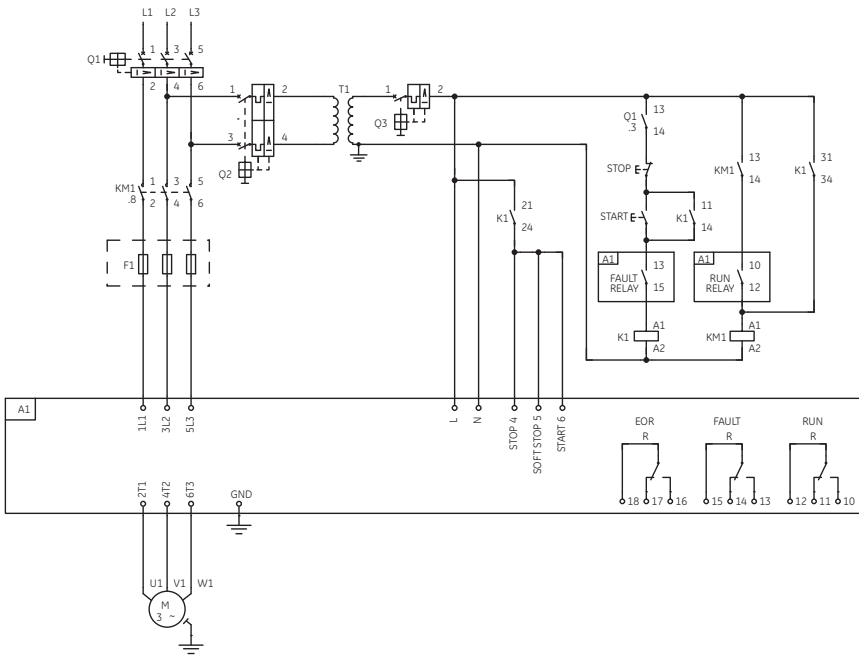
Reduced Voltage Starters

Solid State

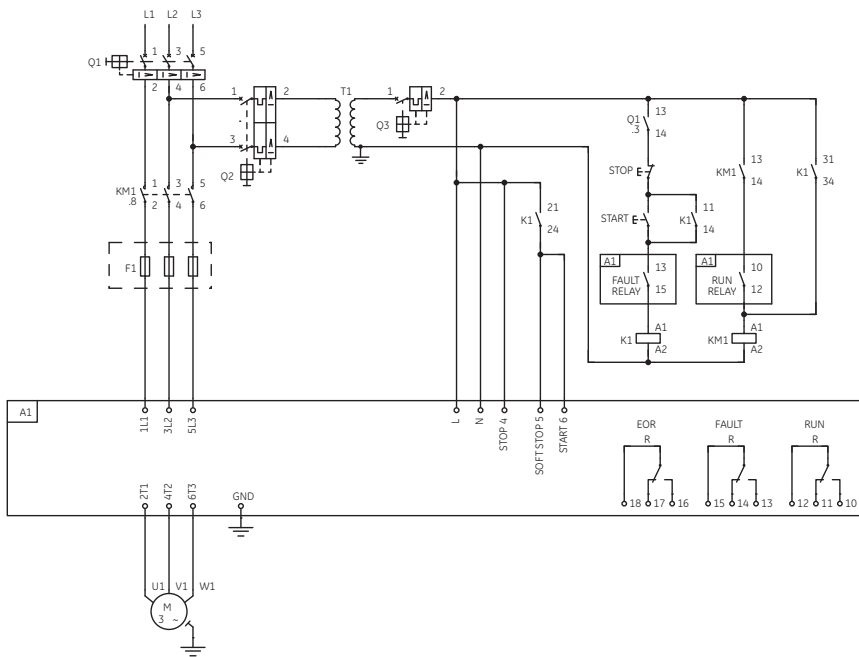
ASTAT XT Soft Starter

Application Wiring Diagrams - Basic Diagram with Line Contactor

Section 2



With Soft Start and Coast to Stop by Push Button Control



With Soft Start and Soft Stop by Push Button Control

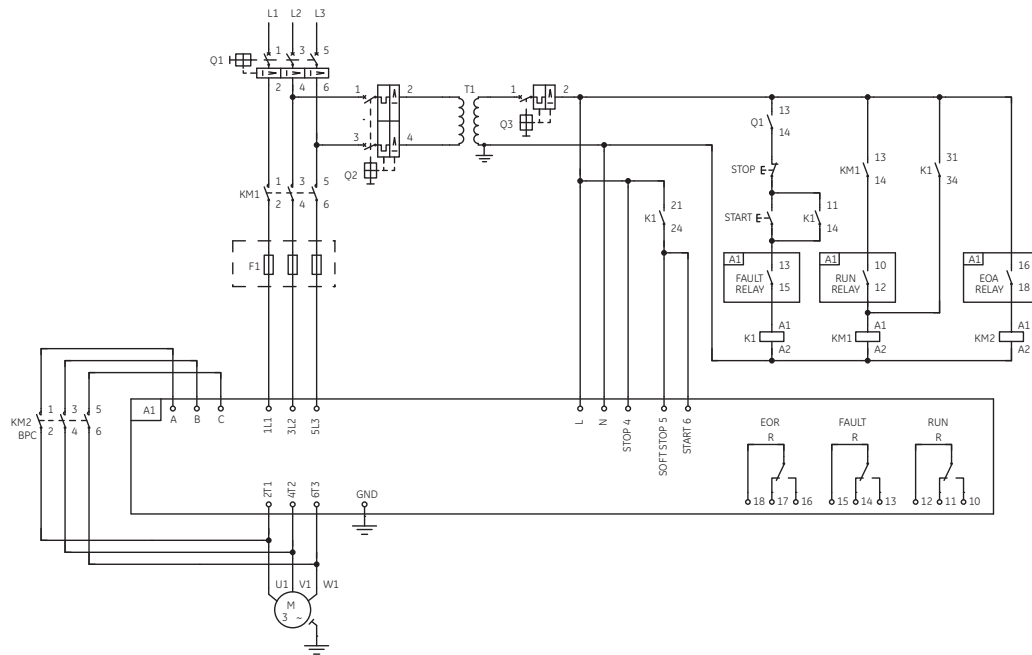
Notes:

- Check coordination tables for proper selection of Breaker and Line contactor.
- Control Voltage and Control Input Voltage are from same source in above example. Please check manuals if you have different sources for Control Voltage and Control Input Voltage.
- Semiconductor Fuses "F" are only required for Type 2 coordination. Please check coordination tables

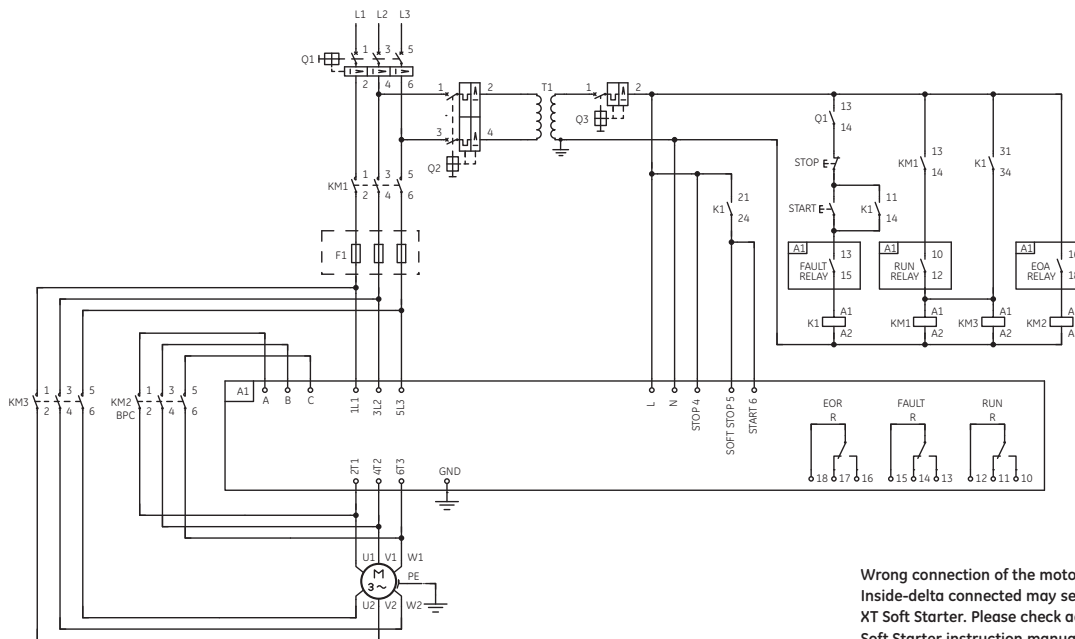


Reduced Voltage Starters Solid State ASTAT XT Soft Starter Application Wiring Diagrams

Section 2



Basic Diagram with Line and Bypass Contactors
With Soft Start and Soft Stop by Push Button Control



Basic Diagram in "Inside Delta" Configuration
with Line and Bypass Contactors
With Soft Start and Soft Stop by Push Button Control

Wrong connection of the motor, or the ASTAT XT Soft Starter when it is Inside-delta connected may seriously damage the motor or the ASTAT XT Soft Starter. Please check additional details given in the ASTAT XT Soft Starter instruction manual.

Notes:

- Check coordination tables for proper selection of Breaker and Line contactor.
- Control Voltage and Control Input Voltage are from same source in above example. Please check manuals if you have different sources for Control Voltage and Control Input Voltage.
- Semiconductor Fuses "F" are only required for Type 2 coordination. Please check coordination tables

